

HD PRO SERIES

Series dedicated to the installer who's looking for a high-level camera making the difference in terms of image quality.



I4-320A-VF

2MP HD ANALOG BULLET CAMERA

Equipped with a 2.8-12mm varifocal lens this 2MP bullet camera is perfect for medium distance surveillance (up to 40m) in both indoor and outdoor scenarios. Featuring 4in1 technology selectable output the camera is suitable in applications where existing analog infrastructure is available and users have a need for the latest HD technology.



MAIN FEATURES

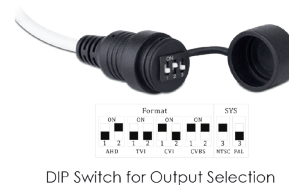
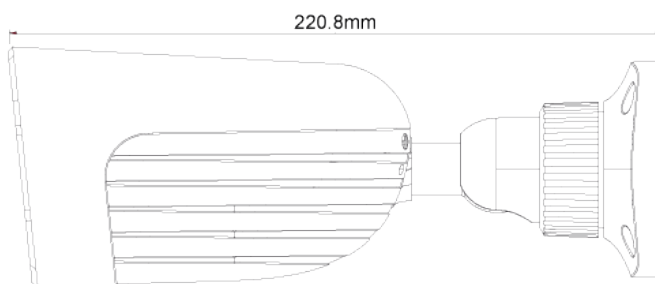
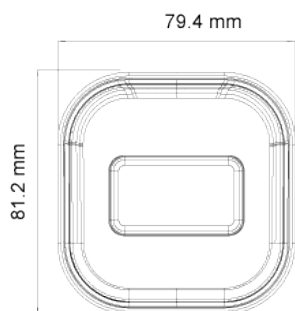
- 2MP
- Pro Series
- 1920x1080 Resolution
- 2.8-12mm Varifocal (88°-33°)
- 3D-DNR
- 4 in 1 (DIP Switch AHD/TVI/CVI/CVBS + PAL/NTSC)
- IP67
- COC support



SPECIFICATIONS

Image Sensor	1/2.9" 2MP Sensor
Image Format	16:9
Effective Pixels	1936x1096
Scanning System	Progressive
Resolution	2MP: 1920x1080 AHD/TVI/CVI 1MP: 1280x720 AHD/TVI/CVI CVBS: 700TVL
FPS	25/30FPS
Min. Illumination	Color: 0.005lux @F1.2, AGC ON B/W: 0lux with IR"
D&N	True Day&Night-ICR
IR LED	3 LED Array (40m)
OSD Menu	Available via CoC Only
CoC Support	Yes
Day & Night Mode	Ext/Auto/Day/Night
Backlight Compensation	No
S/N Ratio	≥52dB (AGC OFF)
White Balance	Auto / Manual
Noise Reduction	3D-DNR
Video Output	2MP / 1MP (Selected by OSD Menu) AHD/TVI/CVI/CVBS + PAL/NTSC (Selected by DIP Switch)
Privacy Mask	No
D-Effect	No
WDR	No
Lens (Field Of View)	2.8-12mm Mega-Pixel Vari-Focal (88°-33°)
Power	DC12V/560mA
Operation Temperature	-30°C ~ 50°C, 10% ~ 90% humidity
Protection Rate	IP67
Dimensions	220.8*79.4*81.2mm
Net Weight	700g
Junction Box	PR-JB12IP66 - PR-JB12IP64

DIMENSIONS

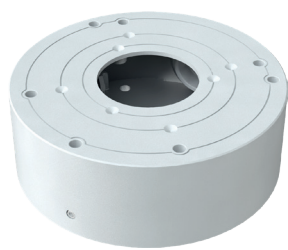


DIP Switch for Output Selection

ACCESSORIES



PR-JB12IP66
Small Water-proof Junction Box



PR-JB12IP64
Small Junction Box