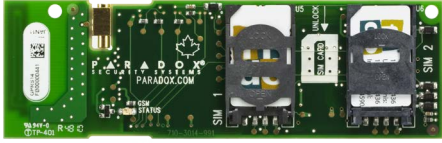


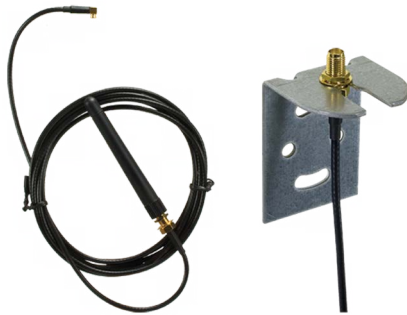
MAGELLAN All-in-One Console Communicator Module



GPRS14 Plug-In Communicator Module

► Features

- Accessory for the MG6250, used to support GPRS / GSM / SMS reporting
- Supports 2 standard cellular provider SIM cards, for provider redundancy
- Simple installation; connects directly onto PCB
- Dimensions: 11 x 3.5 x 1.5 cm (4.3 x 1.4 x 0.6 in.)



ANTKIT Antenna Extension for GPRS14

► Features

- Improves reception by extending the GPRS14 antenna
- Includes wall-mounting bracket
- Length: 2m / 6 ft

MAGELLAN Special Modules



2WPGM 2-Way Wireless PGM

► Features

- 1 programmable, 5A relay output
- Activation events
- Activate / Deactivate PGM after event or timer
- Backup Alarm Reporting option (activates PGM output if communication between the MAGELLAN console and the 2WPGM is lost)
- Built-in transceiver
- Universal input (N.O. / N.C.)
- Anti-tamper switch
- Can be powered by the PA12

► Specifications

Input Voltage	6 to 16.5 Vac or 5 to 20 Vdc
RF Frequency	433 or 868 MHz
Wireless Range	Typical residential environment 35m (115 ft) with MG6250 70m (230 ft) with MG5000 / MG5050 and RTX3
Operating Temperature	0 to 50 °C (32 to 122 °F)
Dimensions	12.5 x 4.6 x 2.5 cm (4.9 x 1.8 x 1.0 in.)

